

Landmarks segmentation in maps with DL

PhD student: Quentin Potié

Supervisors: Guillaume Touya, William Mackaness

ML reading group – jan 2023

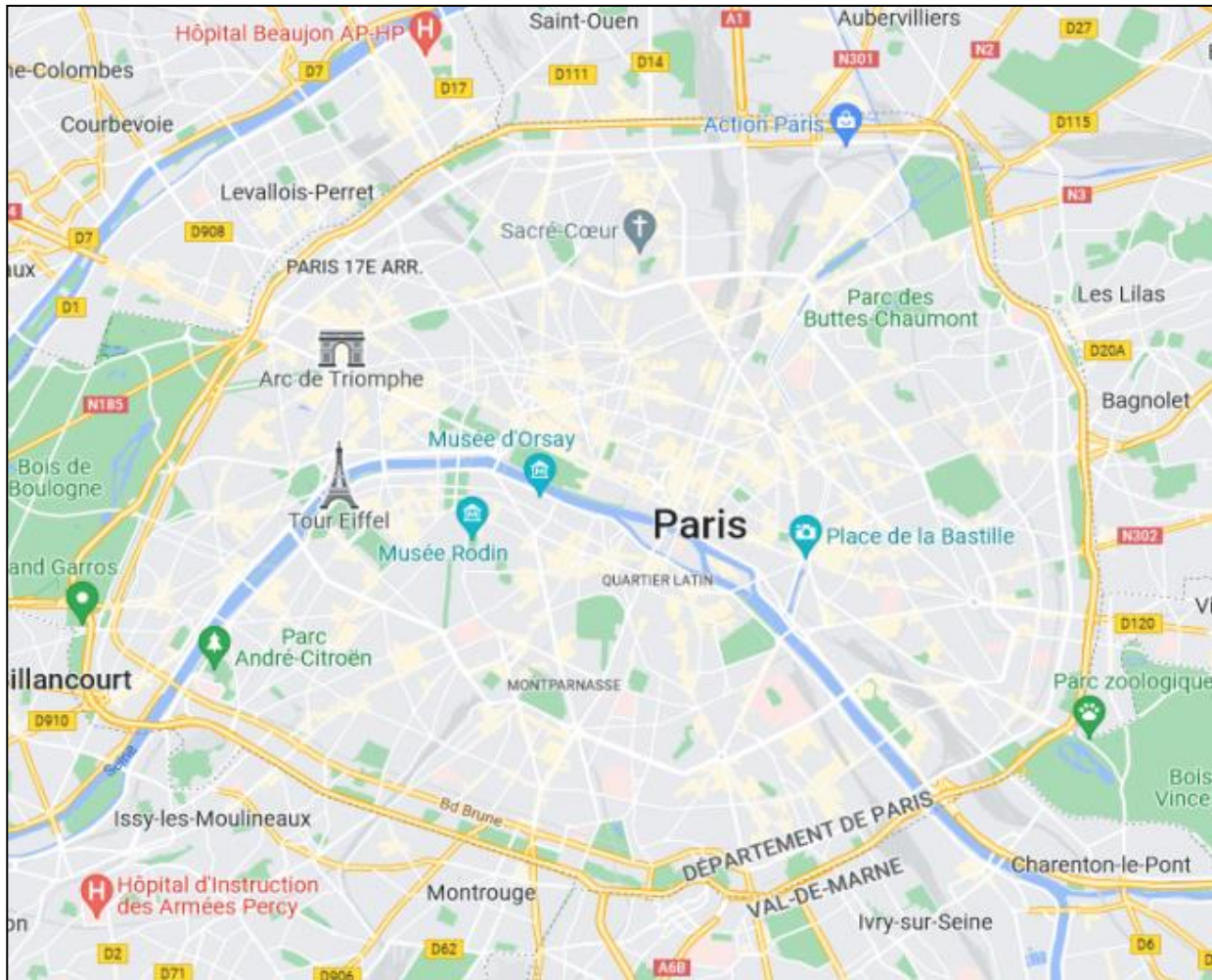


European Research Council

Established by the European Commission

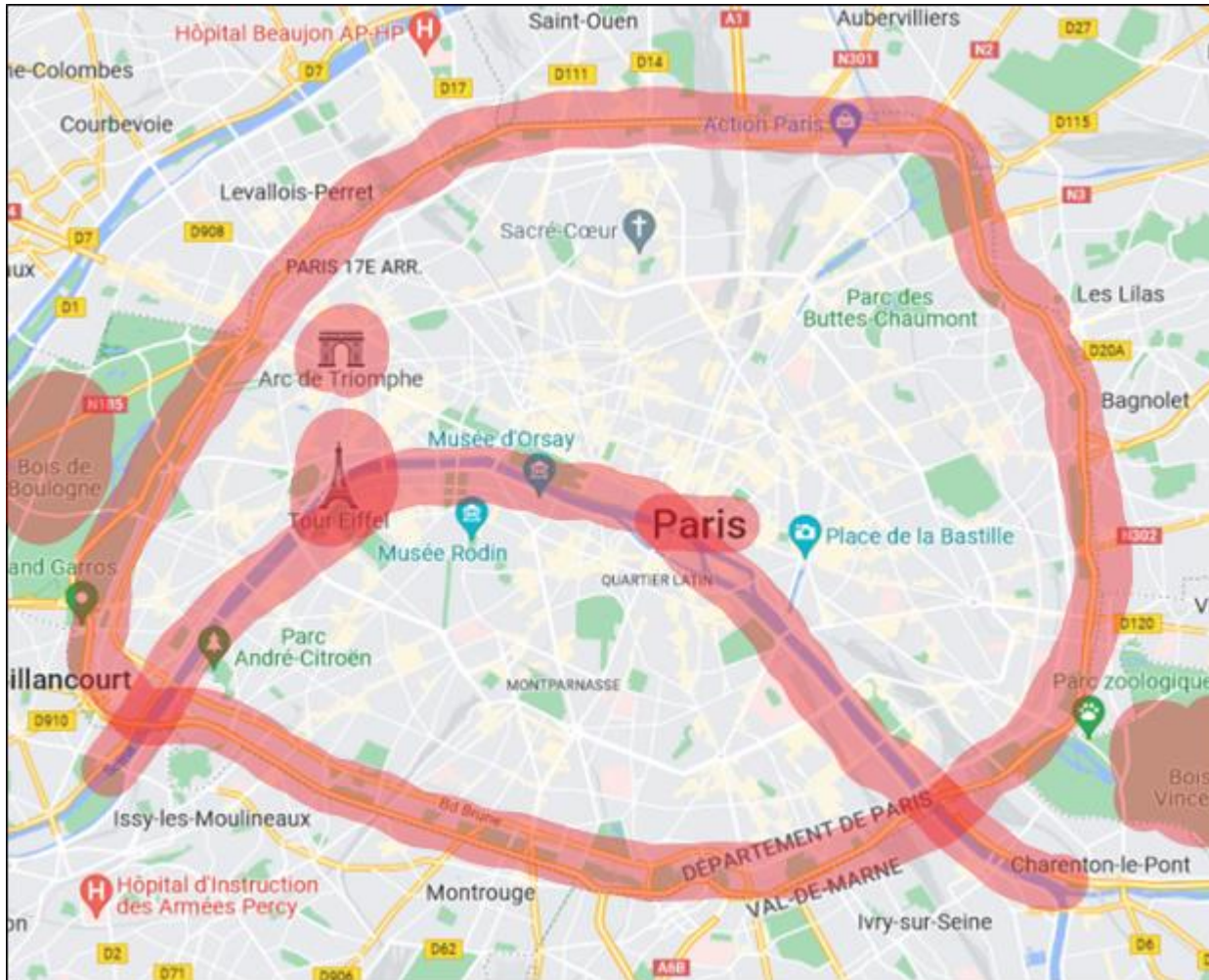


Landmark segmentation



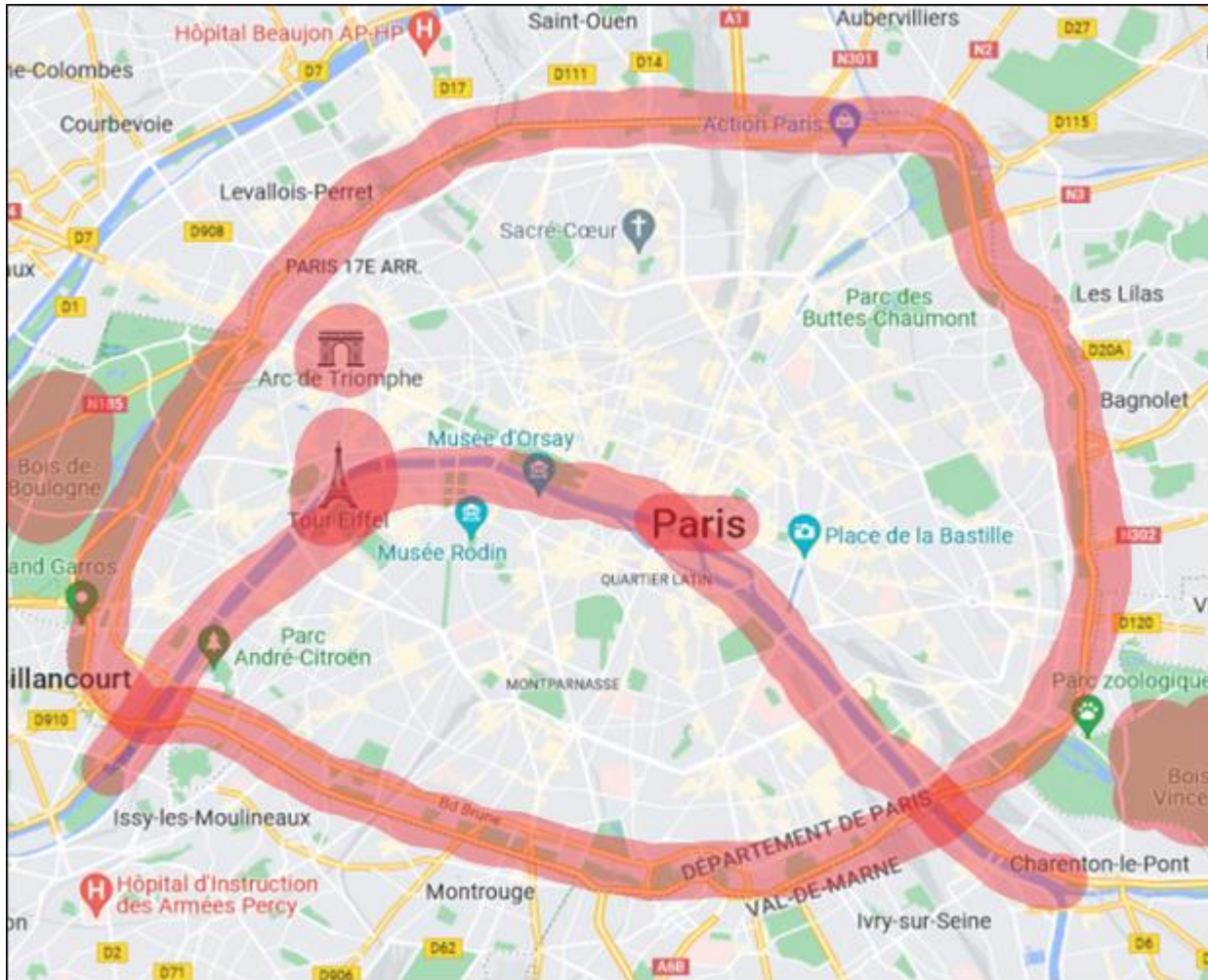
Paris, Google map, 2022

Landmark segmentation



Paris, Google map, 2022

Landmark segmentation



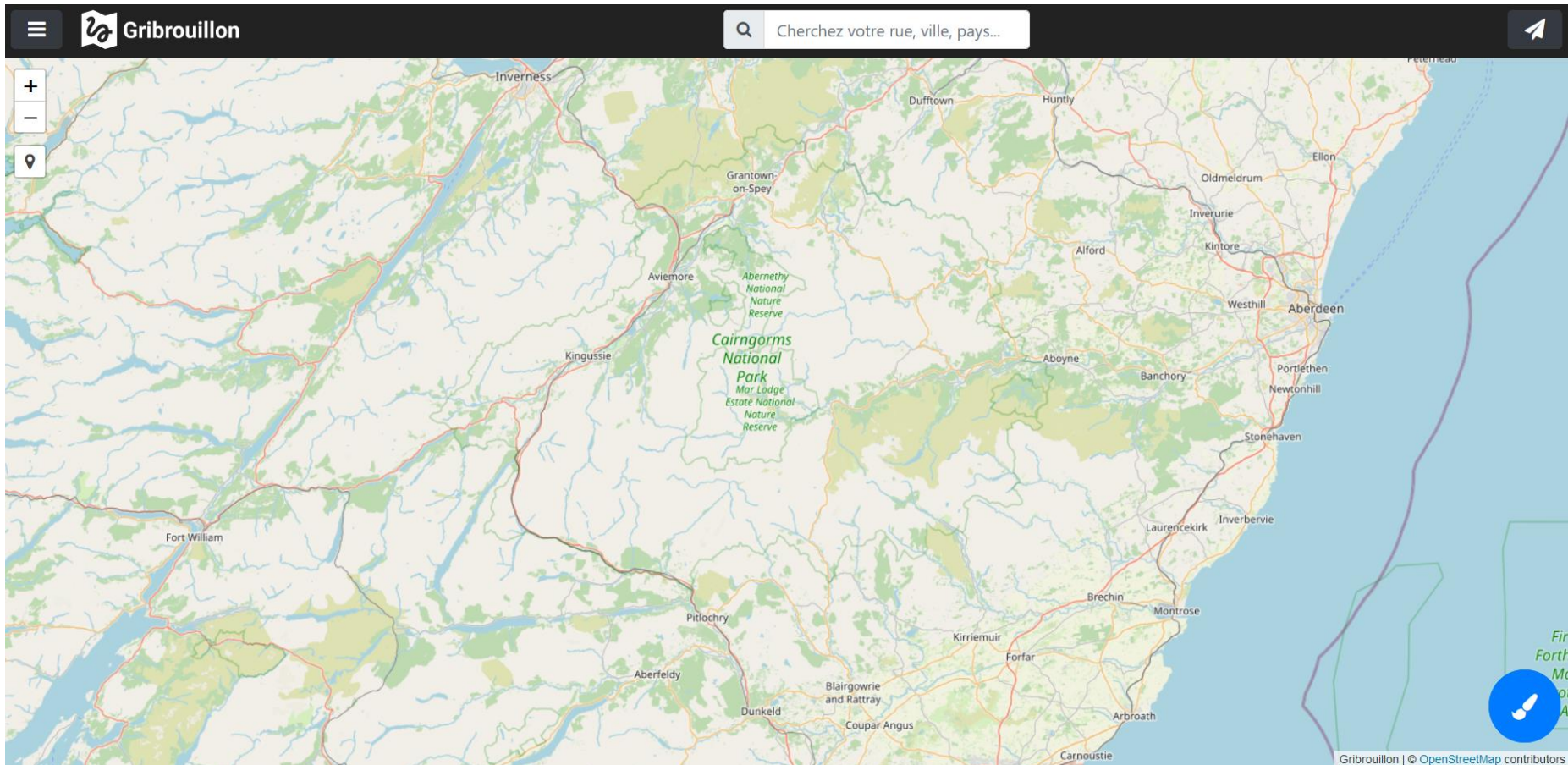
Areas

Lines

Text

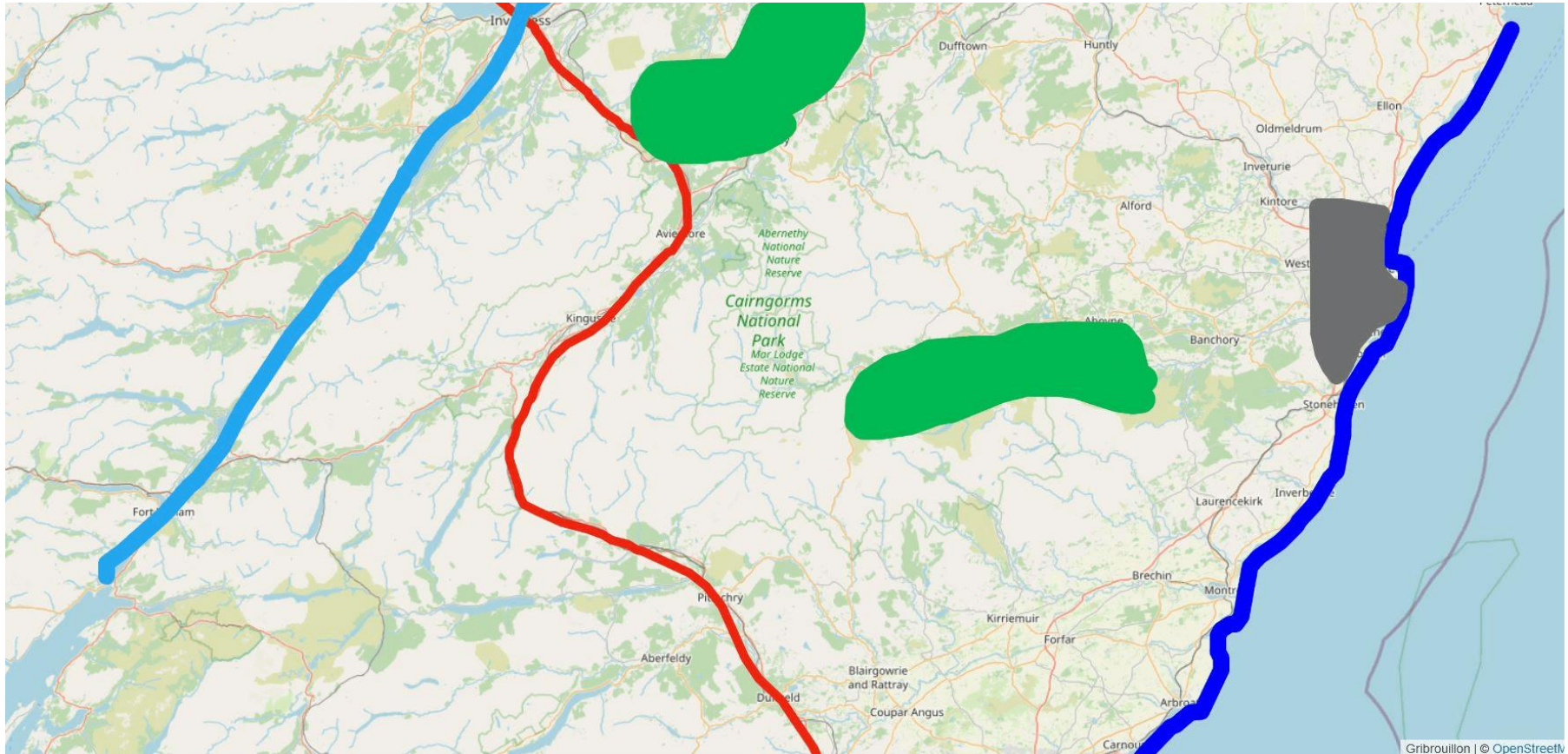
Symbols

Prelim: Nine colleagues and « Gribrouillon »



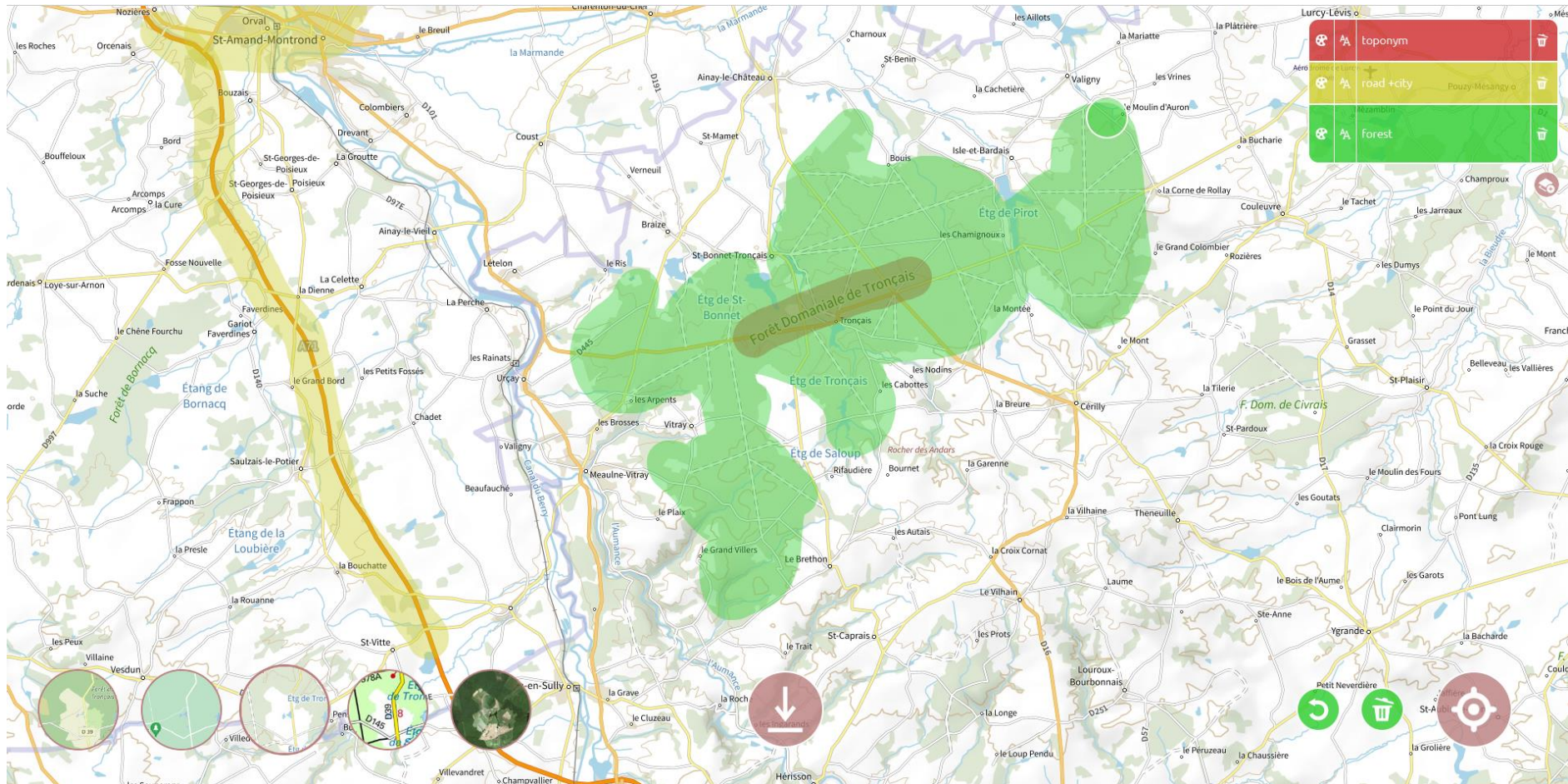
« What geographical features would you remember as you zoom in or out ? »

Prelim: Nine colleagues and « Gribrouillon »



« What geographical features would you remember as you zoom in or out ? »

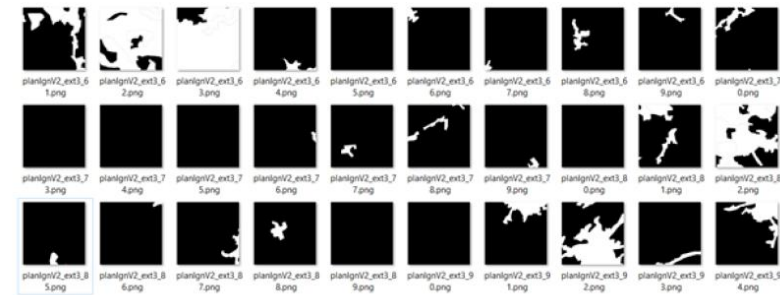
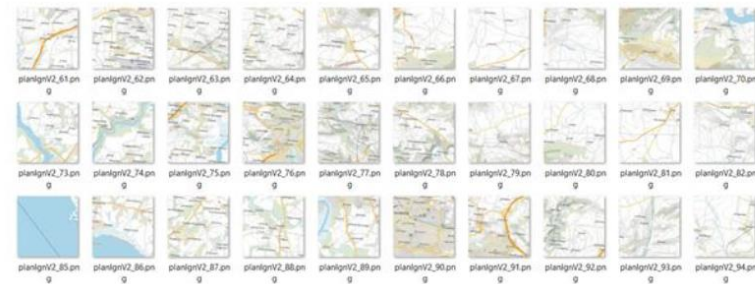
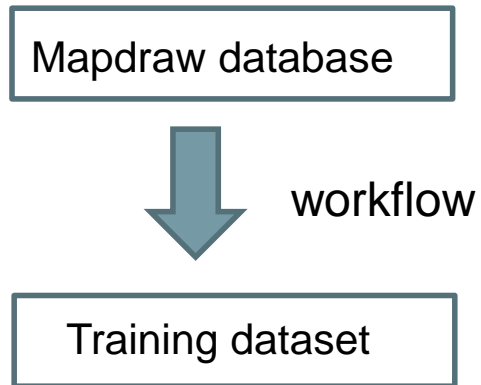
Database creation → Mapdraw



DeepMapdraw interface, by Justin Berli

Currently

- Implementing the workflow



- Learning about the model architectures I want to try (Unet)

Specificities and open questions

Some landmarks are a combination of multiple objects

Some landmarks are large (more than one tile)

The quality of the output is subjective

What model / DL structure is best for my goal ?

How to evaluate a subjective output ?

TRANSFORMERS ???

